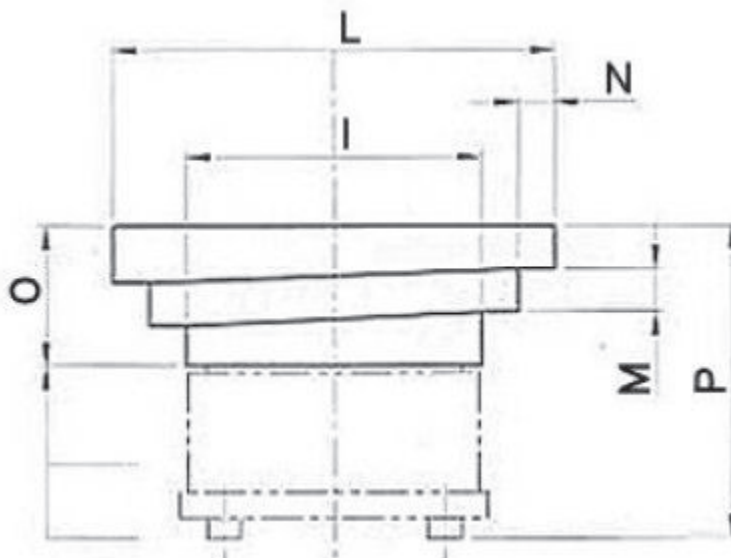




PERMARIND

brovind®

Stepped bowls for circular feeders



Summary table:

Model	I (Ø min)	L (Ø max)	M (step)	N (coil)	O	P	Weight
OB-150	145	245	35	20	90	230	2,5
OB-300	250 - 230	350 - 380	45 - 50	20 - 30	105 - 125	320	5,4
OB-500	355 - 375	480 - 550	60 - 70	25 - 35	155 - 175	440	14
OB-600	450 - 410	600 - 660	70 - 80	30 - 50	160 - 180	470	19,5
OB-850	500 - 500	800 - 950	100 - 120	60 - 90	250 - 325	600	40
OB-1000	550 - 600	900 - 1100	120 - 130	70 - 100	305 - 325	840	61



234 661 888



917 390 183



234 661 889



comercial@permarind.com



Apartado 453 • 3754-909 • Águeda • Vale do Grou • E.N. 1 • Portugal



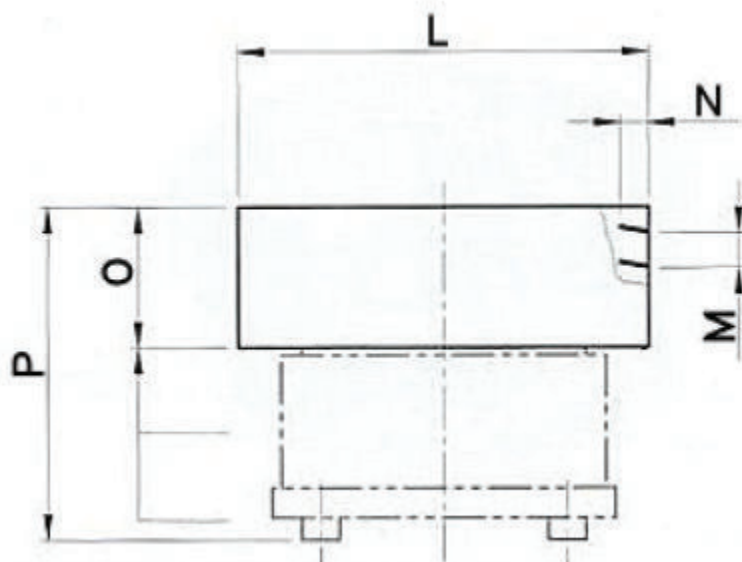
www.permarind.com



PERMARIND

brovind®

Cylindrical bowls for circular feeders



Summary table:

Model	L (Ø max)	M (step)	N (coil)	O	P	Weight
OB-150	230	30	15	80	220	2,8
OB-300	320	45	20	120	305	5,7
OB-500	430	60	30	160	415	13,3
OB-600	550	80	40	200	450	20
OB-850	700	100	70	280	550	36



234 661 888



917 390 183



234 661 889



comercial@permarind.com



Apartado 453 • 3754-909 • Águeda • Vale do Grou • E.N.1 • Portugal



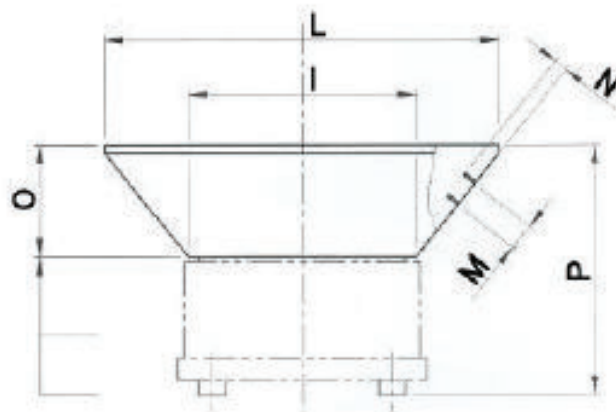
www.permarind.com



PERMARIND

brovind®

Conical bowls for circular feeders



Summary table:

Stainless steel

Model	l (Ø min)	L (Ø max)	M (step)	N (coil)	O	P	Weight
OB-150	140	250	30	10	95	232	3,5
OB-300	250	430	60	10	145	340	8
OB-500	310	560	80	12	180	455	15
OB-600	420	730	120	15	210	480	23
OB-850	520	900	120	20	260	610	36



234 661 888



917 390 183



234 661 889



comercial@permarind.com



Apartado 453 • 3754-909 • Águeda • Vale do Grou • E.N. 1 • Portugal



www.permarind.com