

Part No. Description

**Vacuum Segment Packs**

- 81201 9 elements 2.5" ID
- 81301AS anti-static, 9 elm'ts (1 foot segment)
- 81202 18 elements 2.5" ID
- 81302AS anti-static, 18 elm'ts (2 - one foot segments)
- 89220 180 elements 2.5" ID
- 89320AS anti-static, 180 elm'ts (20 - one foot segments)



**4.5" Round Nozzle**

- 81203 pack of 1
- 81303AS anti-static, pack of 1
- 89223 pack of 10
- 89323AS anti-static, pack of 10



**6"x3.5" Rectangular Nozzle**

- 81204 pack of 1
- 81304AS anti-static, pack of 1
- 89224 pack of 10
- 89324AS anti-static, pack of 10



**Tapered Oval Nozzle**

- 81205 pack of 1
- 81305AS anti-static, pack of 1
- 89225 pack of 10
- 89325AS anti-static, pack of 10



**3" PVC Adapter**

- 81206 pack of 1
- 89226 pack of 10
- \* Not available in "anti-static"



**3" Sheet Metal Duct Adapter**

- 81207 pack of 1
- 81307AS anti-static, pack of 1
- 89227 pack of 10
- 89327AS anti-static, pack of 10



**2.5" Slide Valve**

- 81208 pack of 1
- 81308AS anti-static, pack of 1
- 89228 pack of 10
- 89328AS anti-static, pack of 10



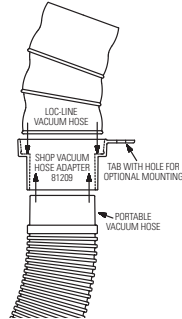
**Shop Vacuum Hose Adapter with mounting tab**

- 81209 pack of 1
- 89229 pack of 10

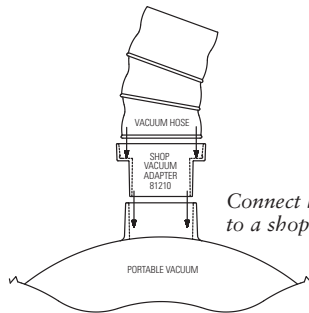


**Shop Vacuum Adapter**

- 81210 pack of 1
- 89230 pack of 10

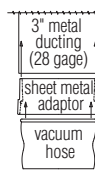
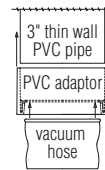


Connect hose directly to a standard shop vacuum hose



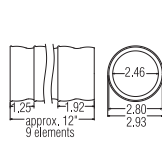
Connect hose directly to a shop vacuum

**MOVE YOUR DUST COLLECTION TO THE SOURCE**

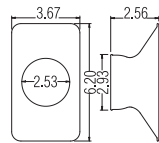


Hose connects to 3" metal duct or PVC pipe using Loc-Line adapters

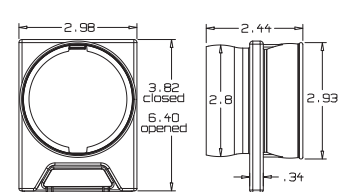
**VACUUM SEGMENT 81201**



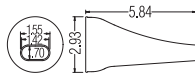
**RECTANGULAR NOZZLE 81204**



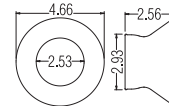
**SLIDE VALVE 81208**



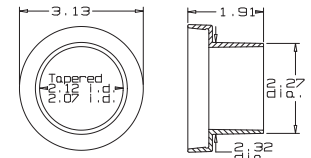
**TAPERED OVAL NOZZLE 81205**



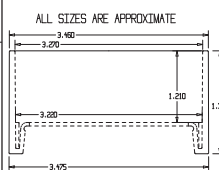
**ROUND NOZZLE 81203**



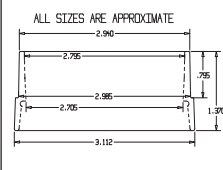
**SHOP VACUUM ADAPTER 81210**



**PVC ADAPTER 81206**



**SHEET METAL DUCT ADAPTER 81207**



**SHOP VACUUM HOSE ADAPTER WITH MOUNTING TAB 81209**

